



Composition

WHAT IS COMPOSITION:

Composition in photography is the deliberate arrangement of visual elements within your frame — it is the difference between a snapshot and a photograph.

The aim is to achieve the most aesthetically pleasing image using “rules” and various techniques.

Keeping the viewer “entertained” rather than bored.

Rules and Techniques

Rule of Thirds

Dynamic Symmetry

Lines

- . Leading lines
- . Converging lines
- . Vertical, curved and horizontal lines
- . Zig - zag lines

Patterns

Repetition

Framing – portrait or landscape, panorama, square

Balance and Proportion – formal and asymmetrical

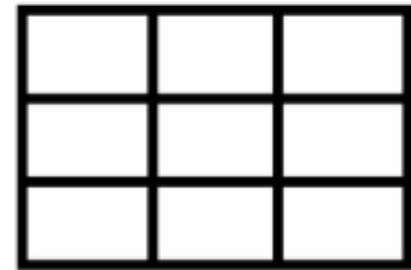
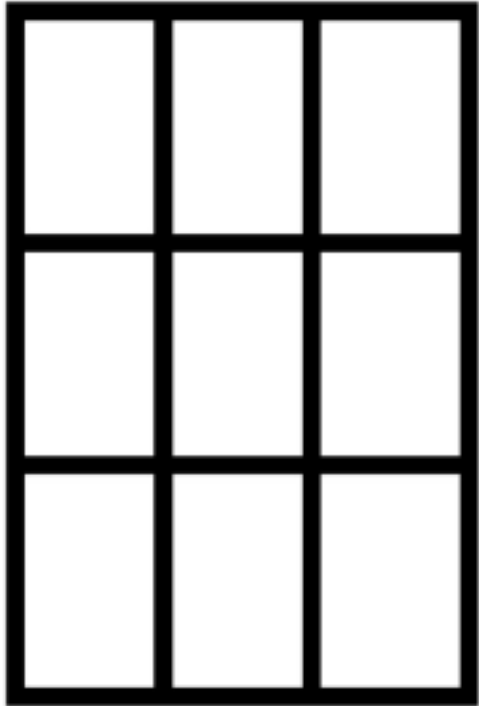
Lens Selection

Selective Focus

Background

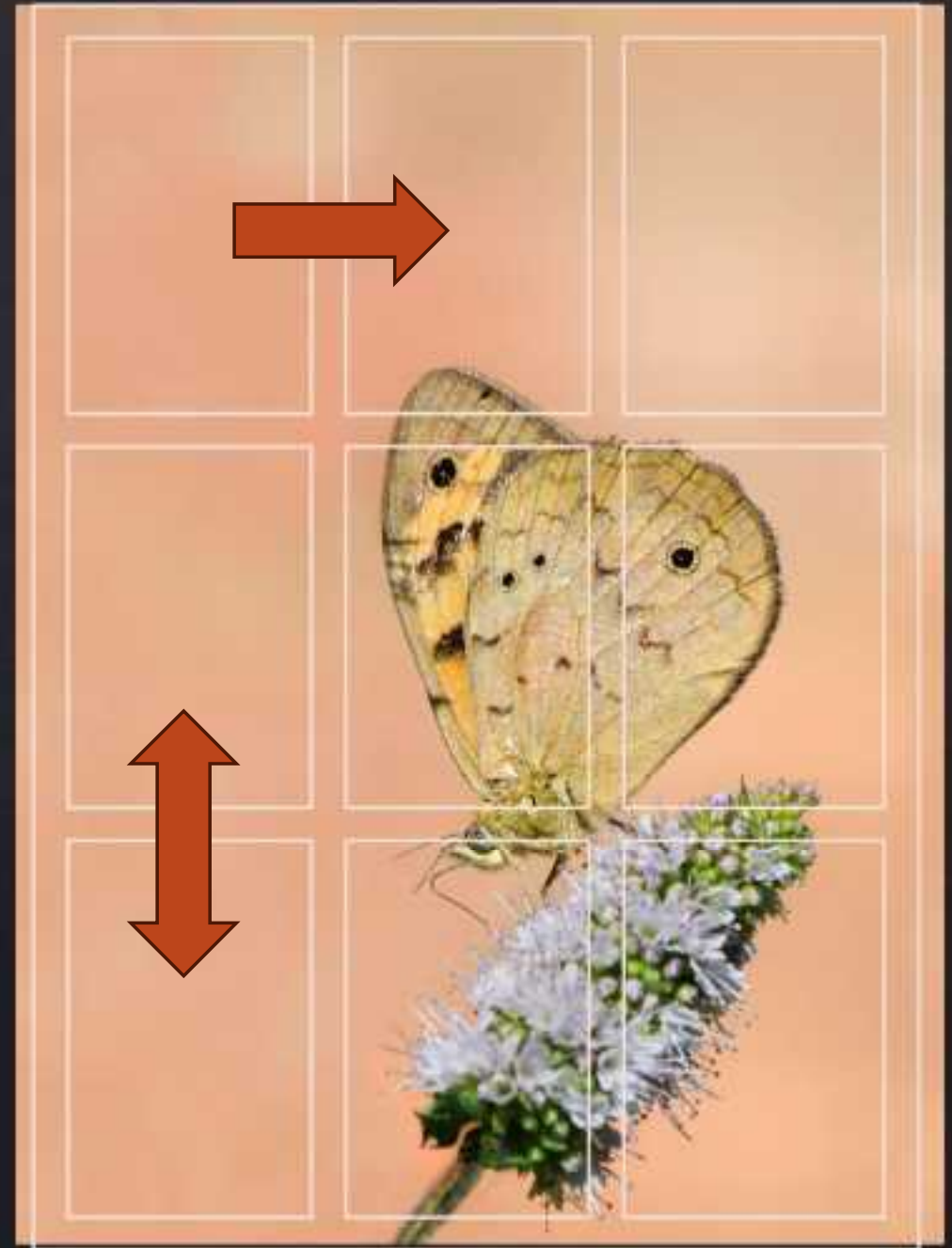
Mood – Colour, Brightness/Darkness, Tones

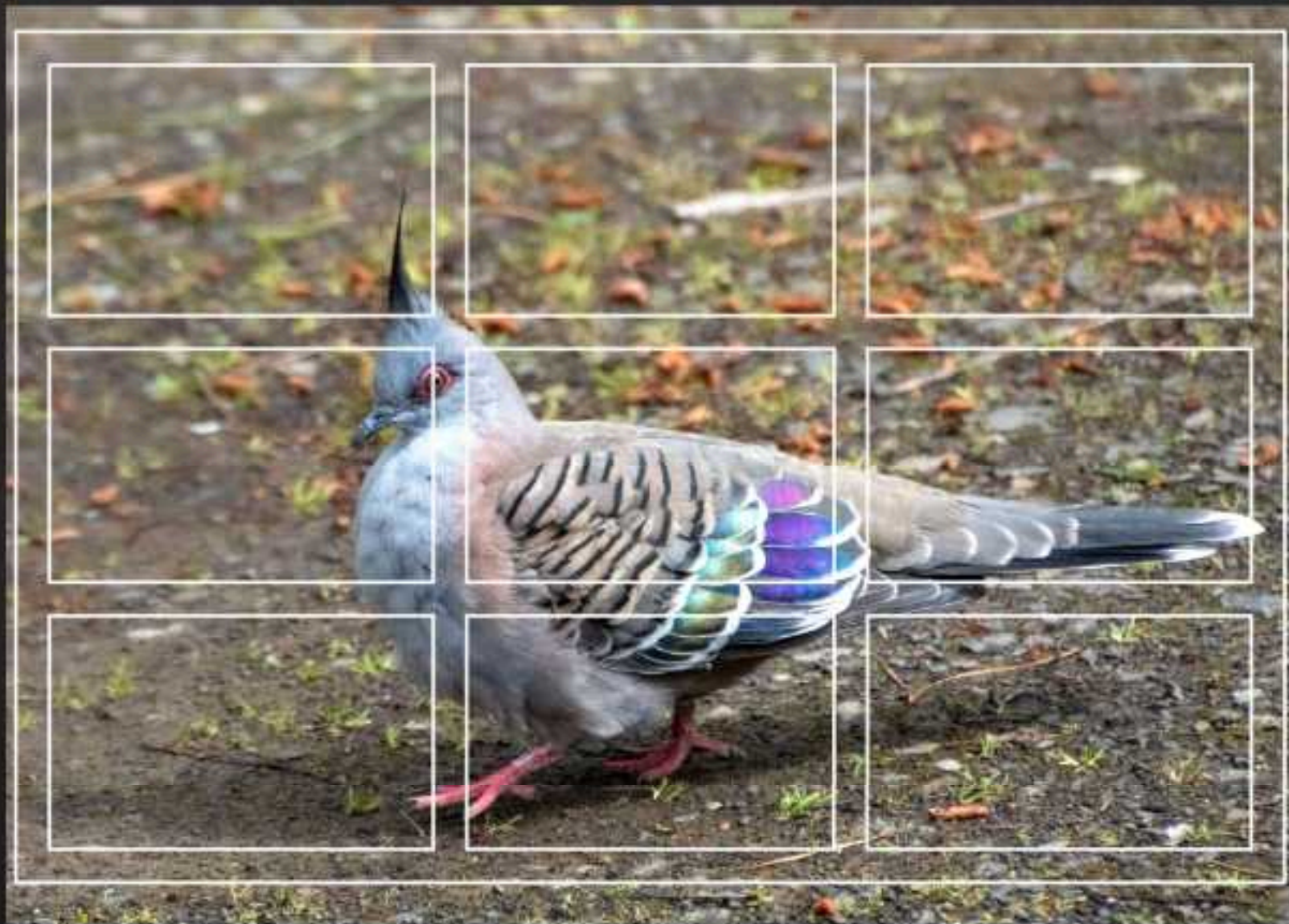
Rule of Thirds



By placing the subject within the Rule of Thirds, Negative Space is created.

The subject has room to “breathe”.





Natural frame – Rock provide a framework around the water



Don't be afraid to try different cropping options



Subject framed
by foliage





* Leading lines –

Water;

Coastline;

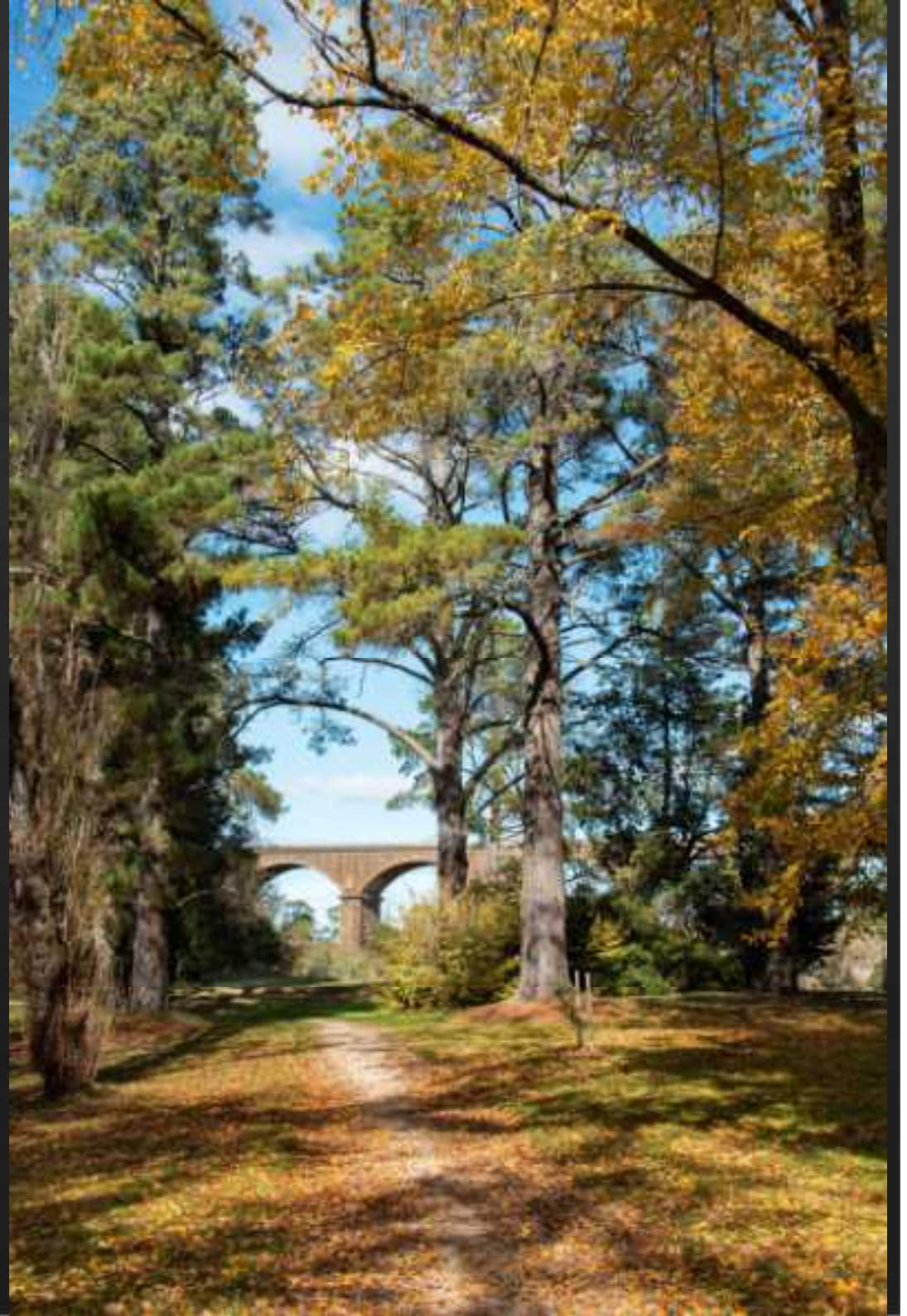
Road (not ideal that the road starts at the side of the image)

* Various focal points

* Textures

* Colours – Similar tones

PATHWAY LEADING TO A
SUBJECTWORTH EXPLORING



SIGN LEADING TO THE MOON



STREAM LEADS TO THE SUNSET



If possible, move to a position before taking the shot so you don't lose details by cropping



Leading & Converging Lines

Pulls your eye within the scene creating various focal points of interest

Shapes

Patterns

Texture

Colour (Tones are similar)

Symmetry

Converging Lines



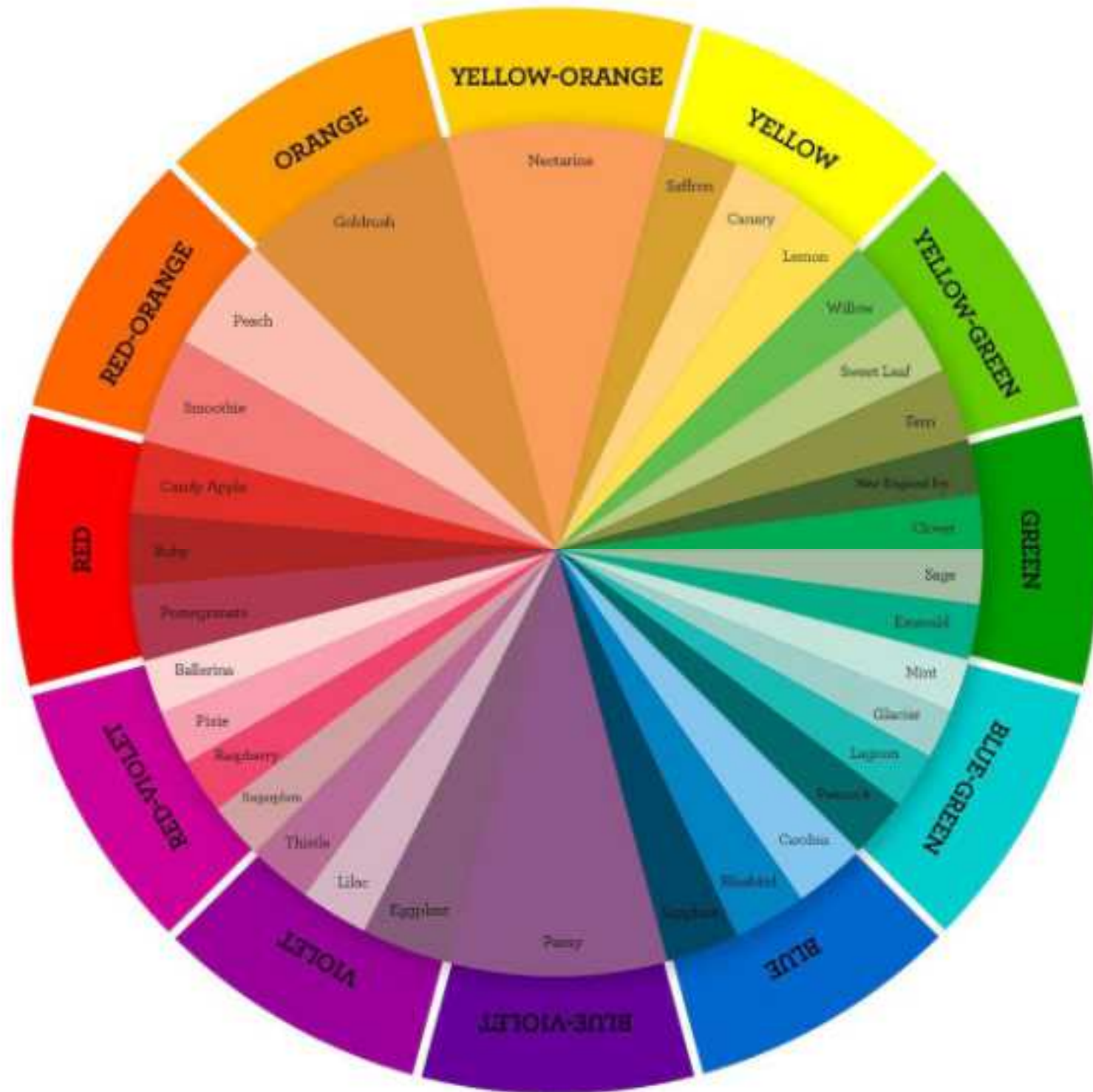
Dynamic Symmetry
Leading/Converging
Lines
Similar Tones
Patterns



THE COLOUR WHEEL

The colour wheel serves as a photographer's roadmap to creating images with impact.

Understanding this circular arrangement gives you the power to make intentional rather than accidental



Colour Relationships

The magic happens when you understand how colours relate to each other on the wheel.

Complimentary colours

sit opposite each other on the wheel -
like different tones of red and green.

They create maximum contrast and visual excitement when placed together.







SIMILAR TONES – OPPOSING COLOURS, RAINDROPS ADD TEXTURE AND 3D COMPONENT

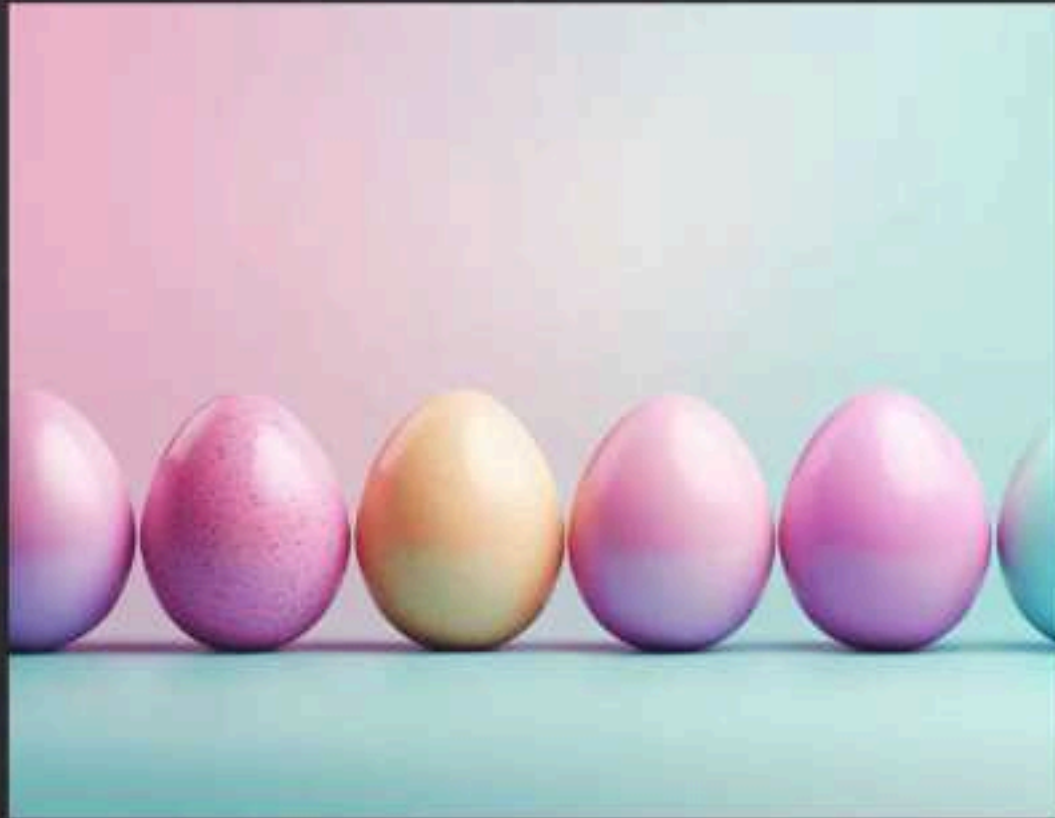


Analogous colours

are neighbours on the wheel.

They create harmony, vibrance and cohesion in images – perfect for creating a unified feeling.

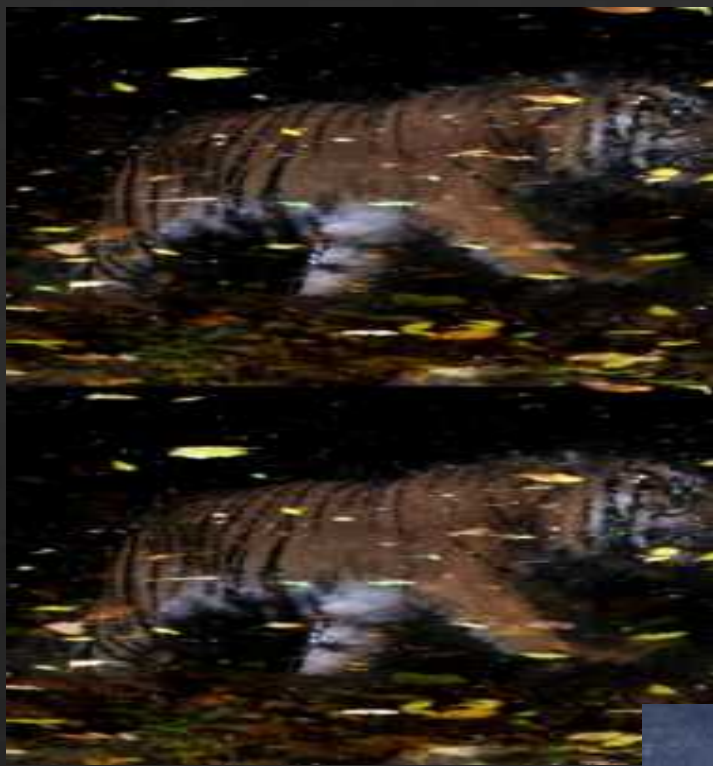




EASTER AND CHRISTMAS ARE AESTHETICALLY PLEASING
AS THEY ARE REPRESENTED BY COMPLIMENTARY COLOURS

ADVERTISER'S USE COLOUR WHEELS TO ATTRACT THE BUYER'S ATTENTION

reflections



PUDDLES/PONDS
CAN CREATE
INTERESTING
AND UNUSUAL
IMAGES





LEADING LINES, TEXTURE, COLOUR – BUT WITHOUT THE REFLECTIONS

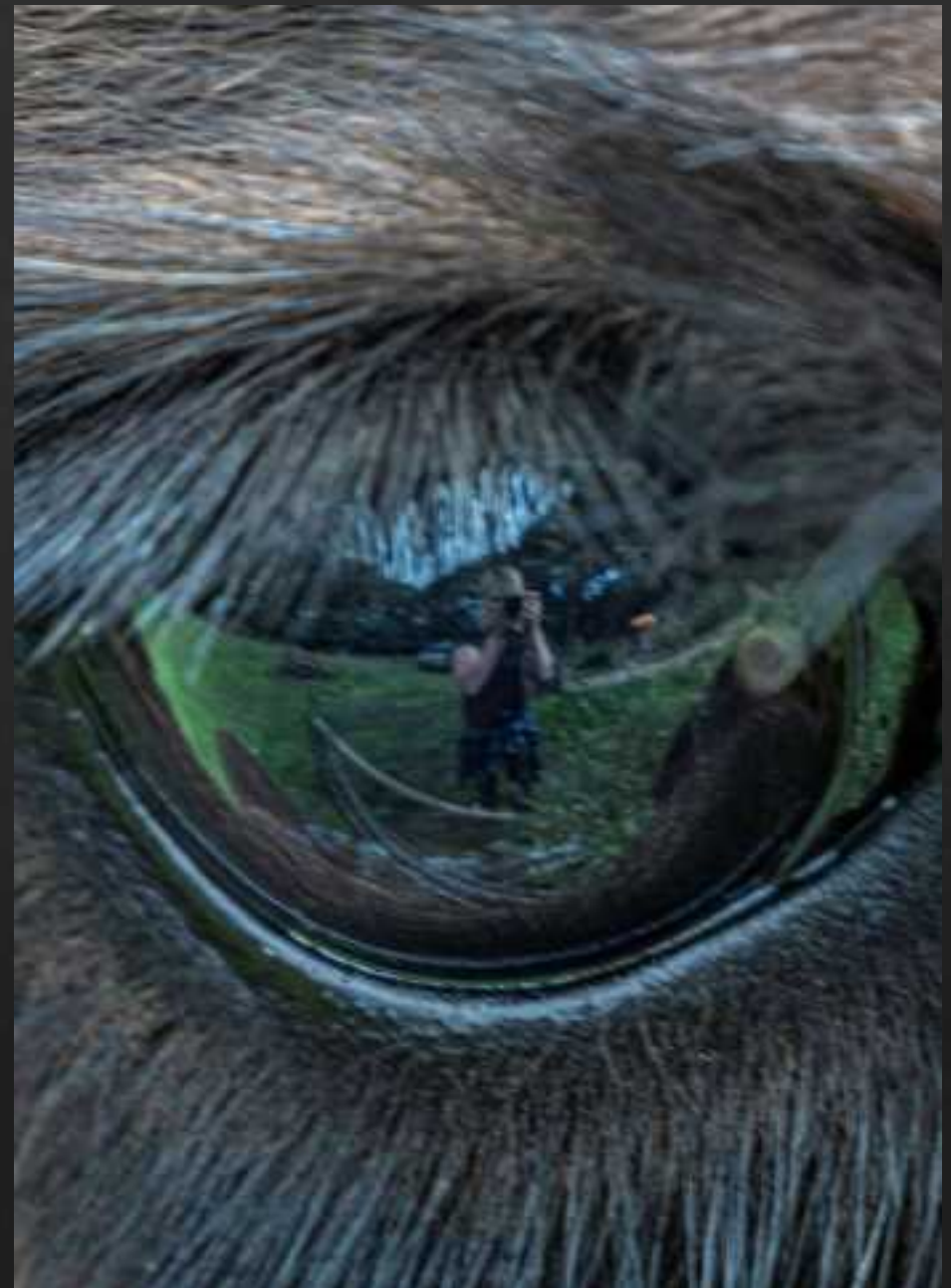


THE IMAGE LACKS THAT EXTRA OOMPH





HAVE SOME FUN – NOT COMPETITION OR WALL WORTHY,
BUT FUN FOR YOUR SCRAPBOOK





Jenni
PHOTOGRAPHY

Learn to seelike a photographer:

Ensure your horizons are straight!

Watch your background.

If you are taking a portrait shot, make sure there are no objects protruding from a person's head or ear etc.

Check for overhanging branches coming from nowhere.

Don't cut off body parts, bits of animals, tops of buildings or flag poles etc.

Follow an animal's gaze and allow space for that gaze within the shot

The human eye reads from left to right so place your subject to the right to allow the viewer time to reach the subject.

Flip the image in post processing if necessary.



The subject's gaze instils curiosity and holds the viewer's attention longer



GIVE A MOVING SUBJECTROOM TO MOVE INTO

The
plane has
nowhere
to land





This Presentation is **just the beginning** of good composition but provides tips to consider when achieving a more aesthetic image.

Mieke Boynton has excellent tutorials on LandscapeComposition (and other subjects) for \$5!

[Mieke Boynton Photography](#)
[Australian Landscape Photographer](#)